

LABOUNTY®

MSD Mobile Shears Product Catalog

Selection,
Innovation,
Performance

The leader in mobile shears



Your Trusted Partner in the Scrap and Demolition Industry

LaBounty has supplied the most reliable shear and demolition attachments to the market since 1973. When LaBounty invented the mobile shear in 1977, it drastically improved metal and concrete processing and transformed an entire industry.

With business output and efficiency top of mind, LaBounty continues to deliver mechanical and digital innovations that put customers at the forefront of productivity. Backed by one of the industry's best warranties and a world-class service and support team, users can spend time focusing on what matters most: because we know it's what's on the ground at the end of the day that counts.



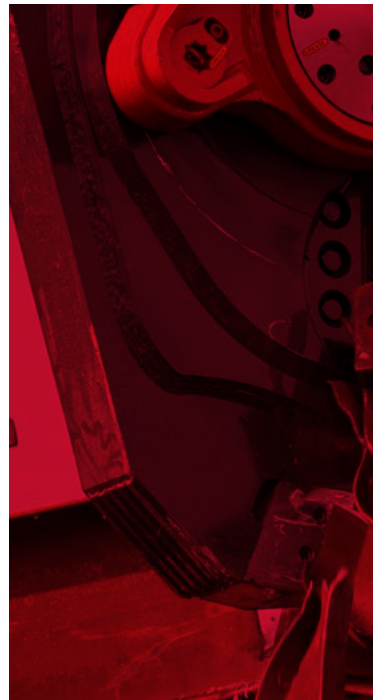
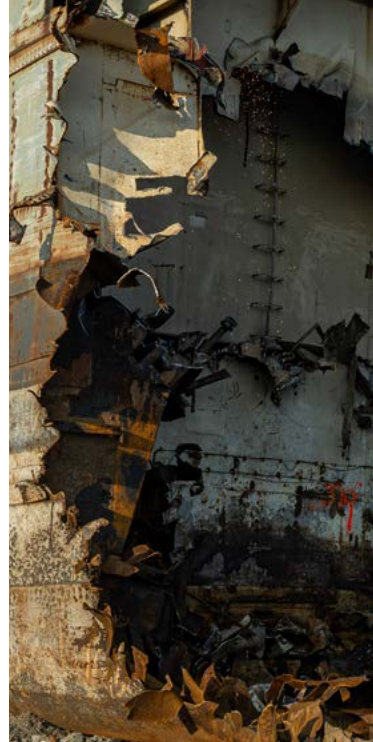
80+ Dealers Globally

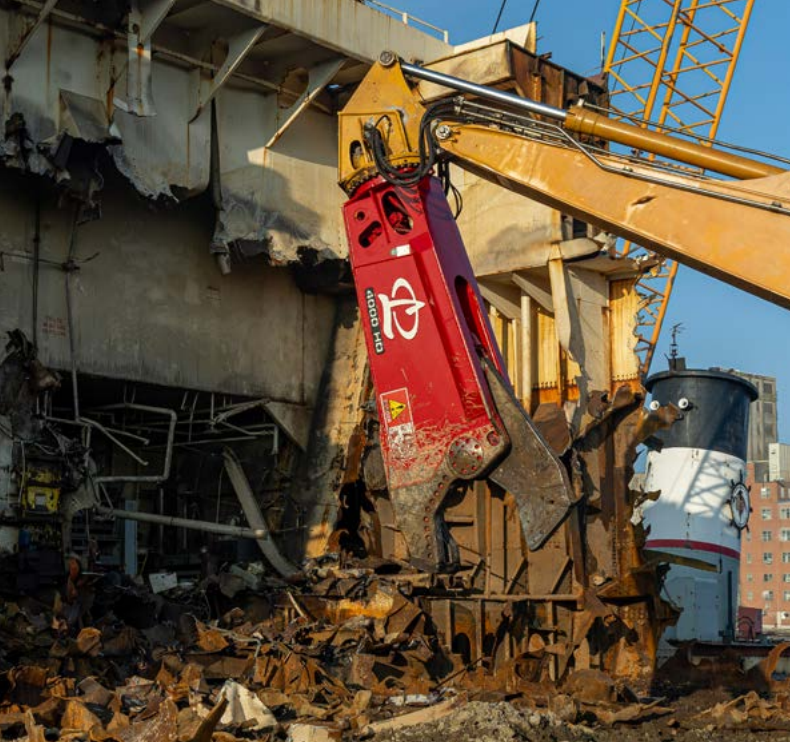


**50+ Years in Scrap
& Demolition Industry**

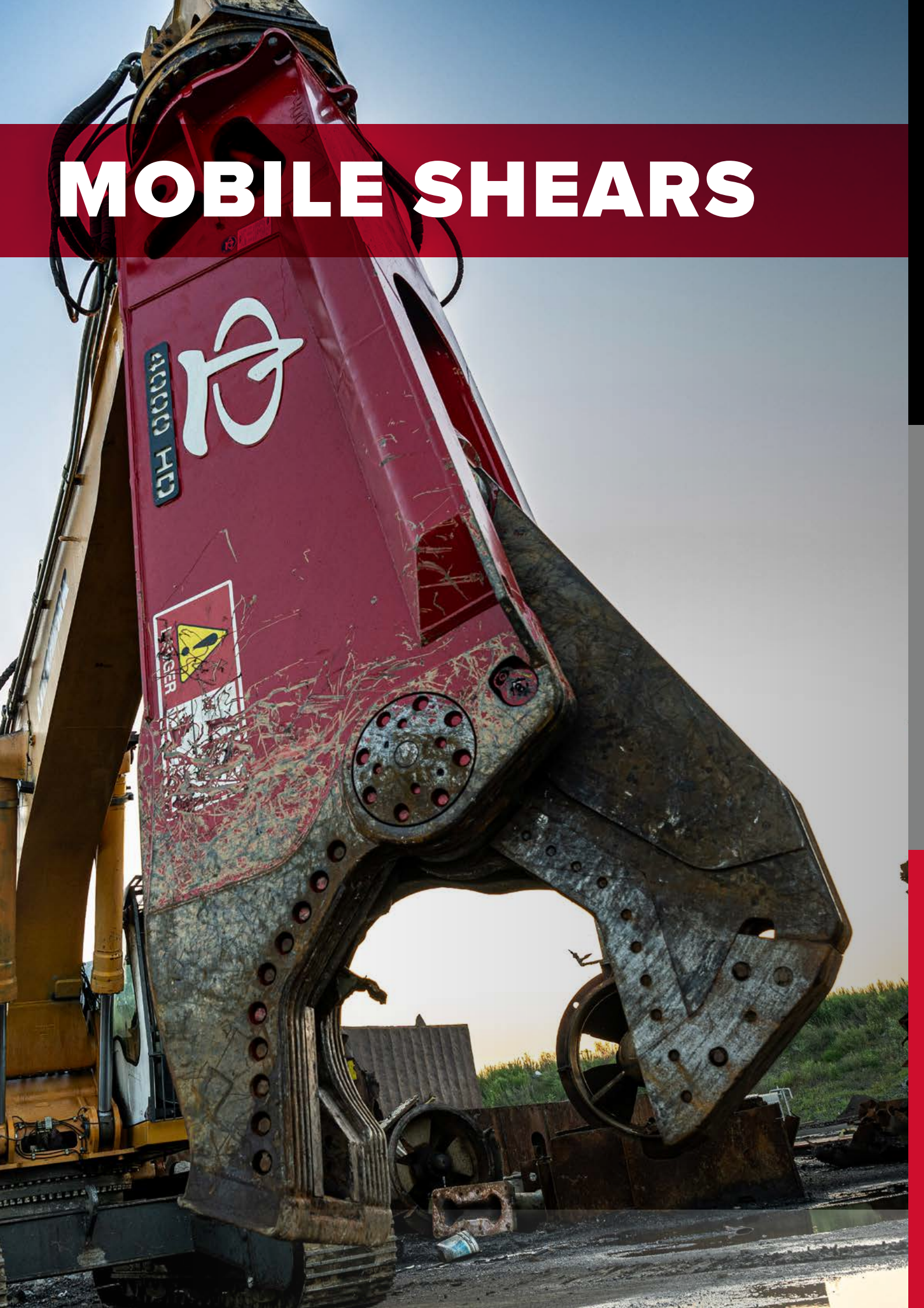


World Class Product Support





MOBILE SHEARS

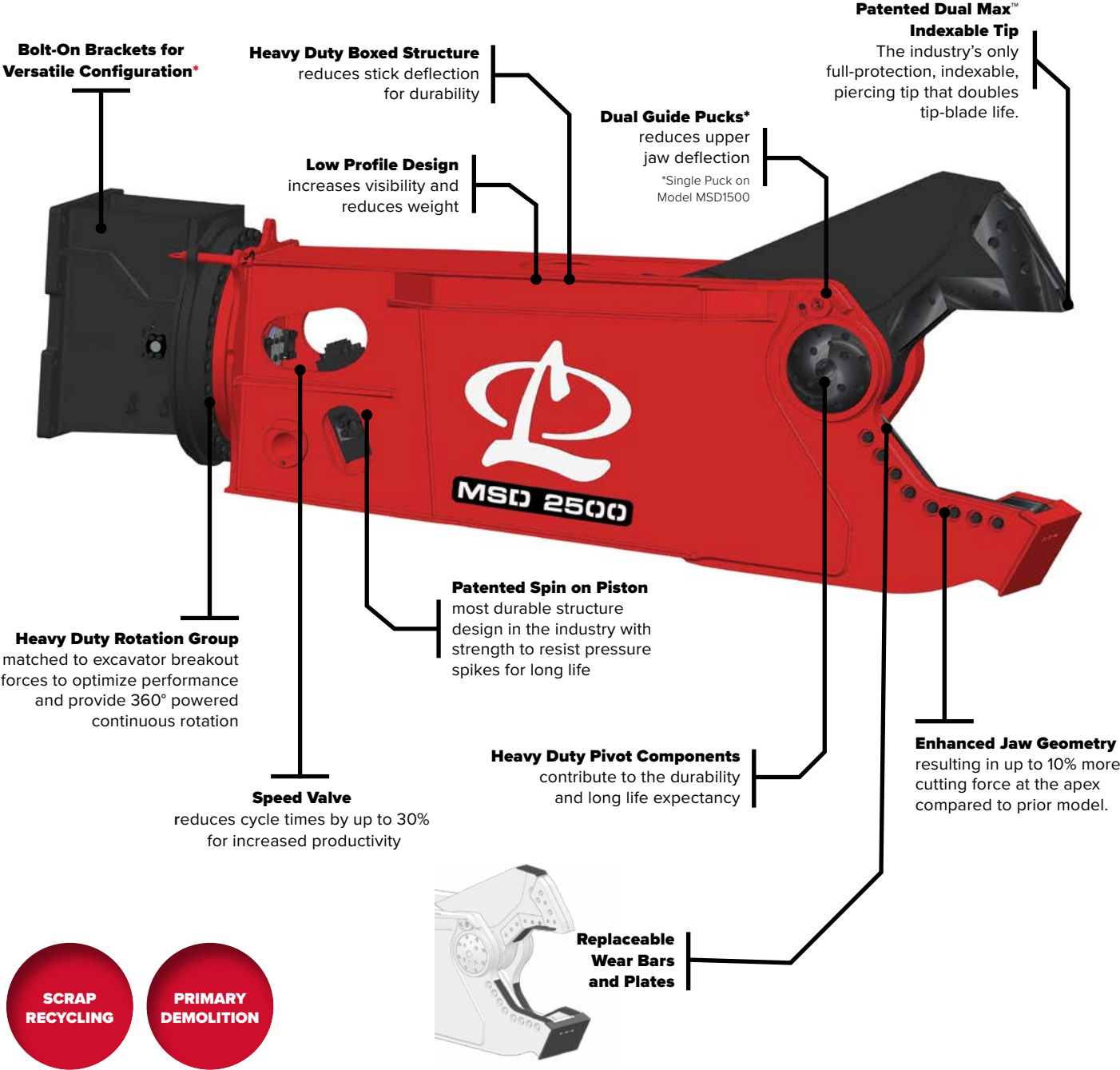




LEGEND SERIES

Features & Benefits

The objective was simple: reduce maintenance and boost productivity. As a result, productivity and uptime were optimized. LaBounty® shears have demonstrated their effectiveness in scrap metal processing, bridge deconstruction, and industrial demolition for many years. The Legend Series Mobile shear include the industry's exclusive fully protected and indexable mobile shear tip - the Dual Max™ piercing tip.



SCRAP RECYCLING

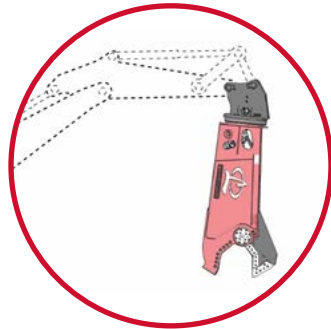
PRIMARY DEMOLITION

***Up to the 4500 model. Model shown uses optional equipment.**

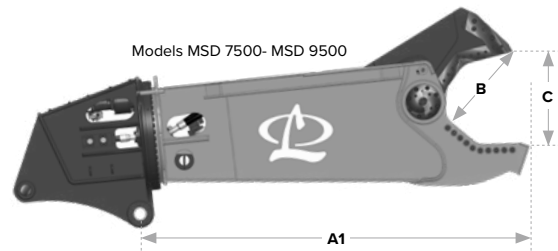
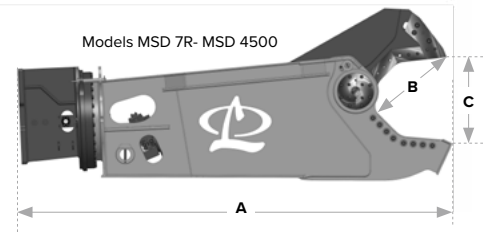
SPECIFICATIONS



Boom-mounted
2nd member



Stick-mounted
3rd member



MSD ROTATING VERSION		7R ¹	800R	1000R	1500R	2000R ¹	2250R ¹	2500R ¹	3000R ¹	4000R ¹	4500R ¹	7500R ¹	9500R ¹
Series		-	Saber	Saber	Legend	Legend	Legend	Legend	Legend	Legend	Legend	Legend	Legend
Min. Carrier weight class - boom mounted ¹	t	3	8	10	18	22	24	30	40	45	50	68	95
Min. Carrier weight class - stick mounted ¹	t	8	12	18	30	40	45	50	70	80	85	Consult Factory	Consult Factory
Service weight ²	kg	605	1,230	1,995	3,515	5,210	6,150	6,740	8,310	9,570	10,090	14,200	20,275
Product weight	kg	545	1,160	1,815	3,225	4,900	5,625	6,215	7,735	8,970	9,490	-	-
A - Length	mm	1,730	2,340	2,640	3,125	3,760	4,065	4,065	4,600	5,105	4,880	-	-
A1 - Working Length		-	-	-	-	-	-	-	-	-	-	4,710	5,620
B - Jaw depth	mm	250	430	510	640	740	760	840	940	1,090	1,090	1,120	1,280
C - Jaw opening	mm	280	380	480	540	710	760	790	860	970	990	1,090	1,210
Oil flow rate (rotation)	l/min	11-19	11-19	11-19	11-19	19-30	30-45	30-45	30-45	30-45	30-45	30-57	30-57
Max. operating pressure (rotation)	bar	140	170	170	170	170	170	170	170	170	170	170	170
MSD STATIC VERSION			800	1000	1500	2000	2250	2500	3000	4000	4500	7500	9500
Min. Carrier weight class - boom mounted ¹	t	-	7	9	12	19	20	23	30	35	40	55	77
Min. Carrier weight class - stick mounted ¹	t	-	10	16	25	32	40	40	65	65	75	Consult Factory	Consult Factory
Service weight ²	kg	-	1,065	1,905	2,875	4,090	4,800	5,400	6,450	7,800	8,500	12,200	17,000
Product weight	kg	-	995	1,725	2,575	3,790	4,300	4,765	5,800	6,900	7,600	-	-
A - Length	mm	-	1,960	2,290	2,740	3,050	3,300	3,300	3,810	4,320	4,140	-	-
A1 - Working Length	mm	-	-	-	-	-	-	-	-	-	-	3,670	4,470
B - Jaw depth	mm	-	430	510	640	740	760	840	940	1,090	1,090	1,120	1,280
C - Jaw opening	mm	-	380	480	540	710	760	790	860	970	990	1,090	1,210
STATIC & ROTATING VERSIONS		7R	800/R	1000/R	1500/R	2000/R	2250/R	2500/R	3000/R	4000/R	4500/R	7500/R	9500/R
Cycle time (opening/closing)	sec	-	1.4/3.2	1.5/3.3	2.2/2.1	3.4/2.7	4.4/3.5	5.5/3.2	5.9/3.5	4.9/5.1	4.7/4.2	5.4/4.3	7.8/6.2
Oil flow rate (opening & closing)	l/min	-	300	300	410	490	510	530	560	680	750	910	980
Max. operating pressure (opening & closing)	bar	-	350	380	380	380	380	380	380	380	380	380	380

¹ Excavator weight range is a guide only. 2nd member configurations at or near min/max excavator weight and all 3rd member configurations must be preapproved by LaBounty. Quick couplers, short swing machines, long arms all impact carrier size recommendation.

² Service weight includes average adapter plate.

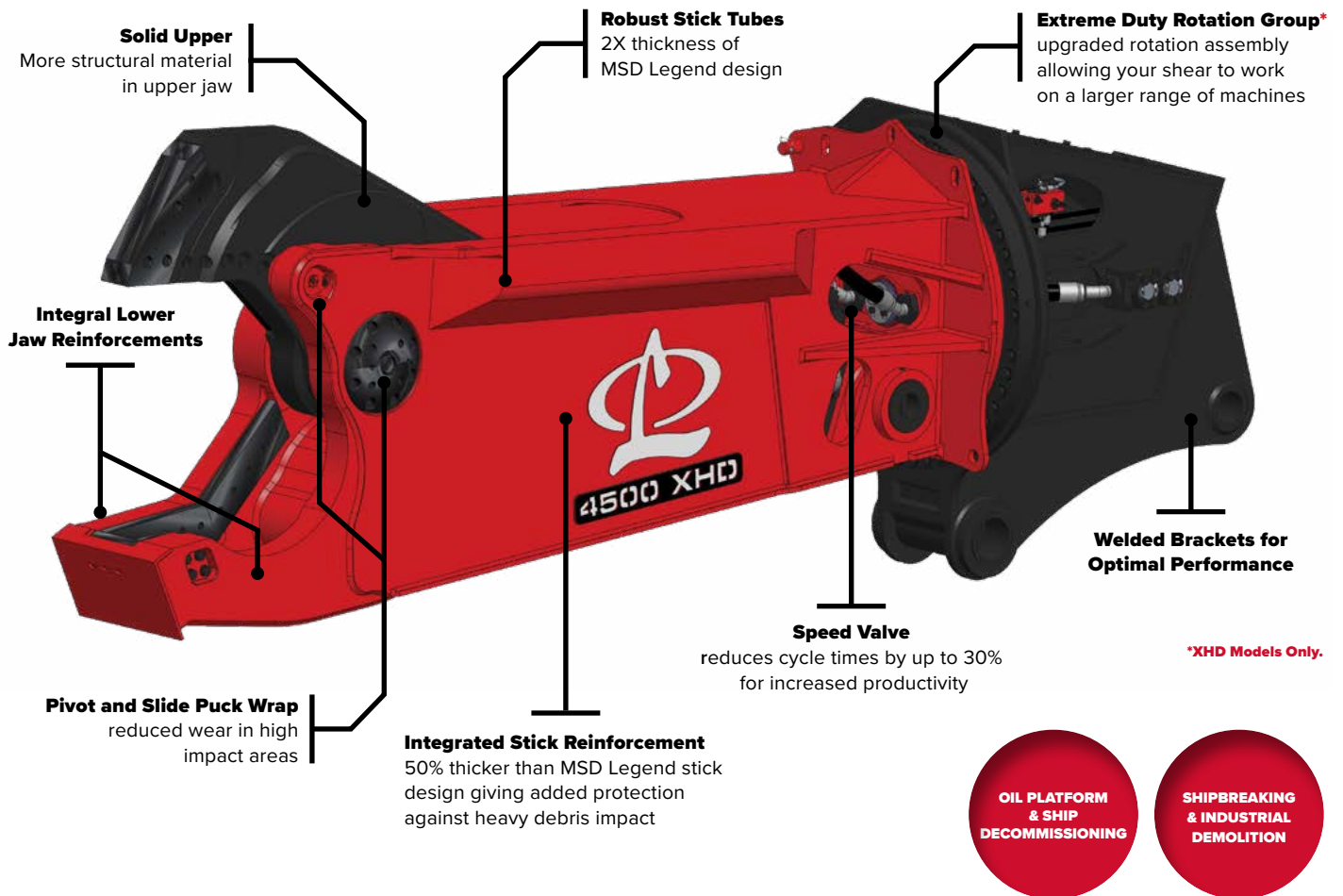
³ Drainage line required.

LaBounty reserves the right to improve, update, or change the product specifications, appearance, or functional attributes without notice.

DESTROYER™ SERIES

Features & Benefits

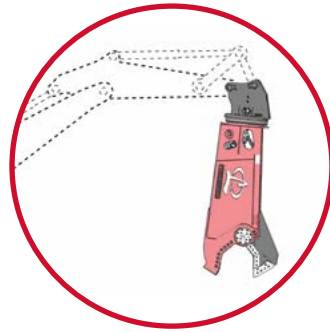
Built for the harshest jobs, LaBounty's Destroyer Class Shear boasts integrated reinforcement and superior protection to minimize downtime and maximize productivity. Not only stronger, the Destroyer can take on bigger jobs so you can put more on the ground.



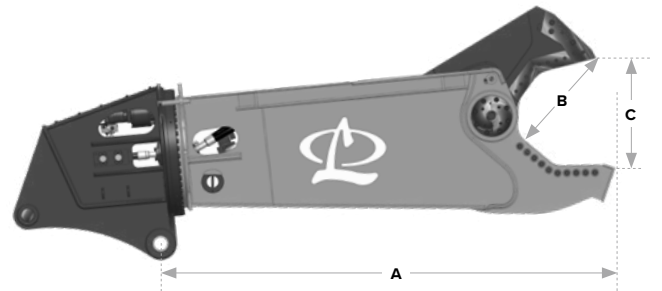
SPECIFICATIONS



Boom-mounted
2nd member



Stick-mounted
3rd member



MSD HD ROTATING VERSION		2500R HD¹	3000R HD¹	4000R HD¹	4500R HD¹	7500R HD¹	9500R HD¹
Min. Carrier weight class - boom mounted ¹	t	36	45	50	50	73	109
Min. Carrier weight class - stick mounted ¹	t	54	75	82	85	Consult Factory	Consult Factory
Service weight ²	kg	7.340	8.400	9.900	10.600	15.060	22.100
A - Working Length	mm	3.860	4.010	4.500	4.340	4.700	5.620
B - Jaw depth	mm	838	965	1.092	1.092	1.120	1.280
C - Jaw opening	mm	787	864	965	990	1.090	1.210
MSD XHD ROTATING VERSION		2500R XHD¹	-	4000R XHD¹	4500R XHD¹	7500R XHD¹	-
Min. Carrier weight class - boom mounted ¹	t	40	-	55	60	91	-
Min. Carrier weight class - stick mounted ¹	t	65	-	114	120	Consult Factory	-
Service weight ²	kg	7.480	-	10.970	11.700	17.150	-
A - Working Length	mm	3.620	-	4.530	4.350	4.790	-
B - Jaw depth	mm	838	-	1.092	1.092	1.120	-
C - Jaw opening	mm	787	-	965	990	1.090	-
HD AND XHD VERSIONS		2500R HD/XHD	3000R HD	4000R HD/XHD	4500R HD/XHD	7500R HD/XHD	9500R HD
Cycle time (opening/closing)	sec	5.5/3.2	5.9/3.5	4.9/5.1	4.7/4.2	5.4/4.3	7.8/6.2
Oil flow rate (opening & closing)	l/min	530	560	680	750	910	980
Max. operating pressure (opening & closing)	bar	380	380	380	380	380	380
Oil flow rate (rotation)	l/min	30-45	30-45	30-45	30-45	30-57	30-57
Max. operating pressure (rotation)	bar	172	172	172	172	172	172

¹ Excavator weight range is a guide only. 2nd member configurations at or near min/max excavator weight and all 3rd member configurations must be preapproved by LaBounty. Quick couplers, short swing machines, long arms all impact carrier size recommendation.

² Service weight includes average adapter plate. Product weights not available for these models.

³ Drainage line required.

Bolt-on bracket is an option for models MSD 2500R HD, MSD 3000R HD, MSD 4000R HD, and MSD 2500R XHD.

LaBounty reserves the right to improve, update, or change the product specifications, appearance, or functional attributes without notice.

APPETITE GUIDE

	I-Beam ¹	H-Beam ¹	Plate ²	Solid Round	Solid Square	Pipe ³	Concrete ⁴
Model	mm	mm	mm	mm	mm	mm	mm
MSD 7R	178	-	7	32	-	127	203
MSD 800	254	203	10	51	44	203	254
MSD 1000	305	203	13	63	51	254	305
MSD 1500	406	254	16	82	70	355	508
MSD 2000	508	305	22	89	82	457	609
MSD 2250	508	355	29	114	108	457	660
MSD 2500	610	381	29	121	114	610	711
MSD 3000	762	457	32	127	121	660	812
MSD 4000	864	559	35	146	133	711	889
MSD 4500	864	559	35	146	133	711	880
MSD 7500	965	686	38	165	152	813	965
MSD 9500	1160	762	41	177	165	965	1.066

The above data reflects appetite in normal usage and may not reflect the maximum size of each shape that can be processed. The actual results may vary depending on actual material construction, steel properties, carrier performance, operator competence, etc. Proper maintenance of the shear is required for maximum cutting performance. Please contact LaBounty to confirm cutting capabilities of specific configurations.

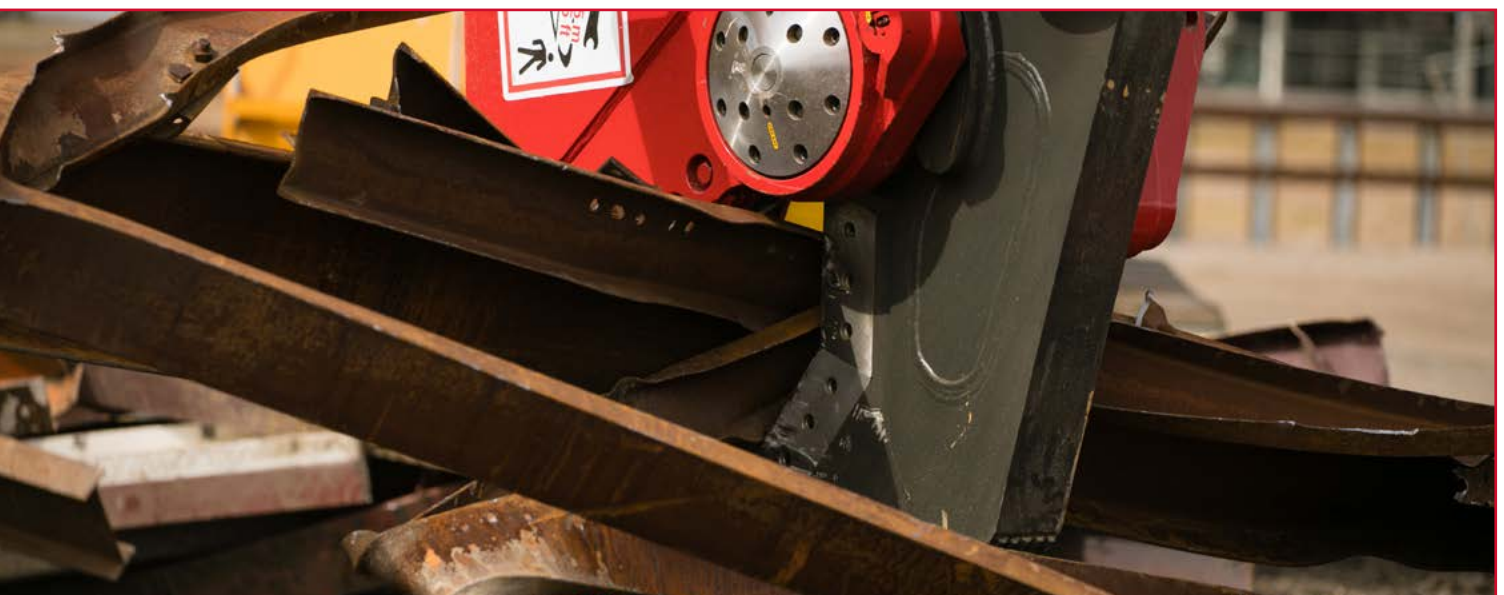
¹ Beams larger than the shear can process in one cut can be processed, in most cases, by piercing the web on the first cut and finishing with a second cut. Please note there are many different styles of beams with varying web, flange and plate thicknesses; all which may affect these appetite estimates.

² Plate thickness dimensions reflect the capacity of the shear to pierce plate at the tip that occurs in many various applications (tank processing, railcar processing, etc). Each model can cut thicker material, provided it will fit in the jaws without having to pierce it.

³ Pipe dimensions shown include schedule 40, mild steel pipe only. Other materials (stainless steel, cast, etc.) and varying wall thicknesses will affect these estimates.

⁴ The estimates shown are for 207-276 bar concrete. The shear's actual capacity can vary dependent on the condition of the concrete, aggregate type, rebar size and spacing, carrier performance, operator competency, maintenance of the shear, etc.

Notice: Contact LaBounty to confirm capabilities of specific configurations.



BLADE KITS

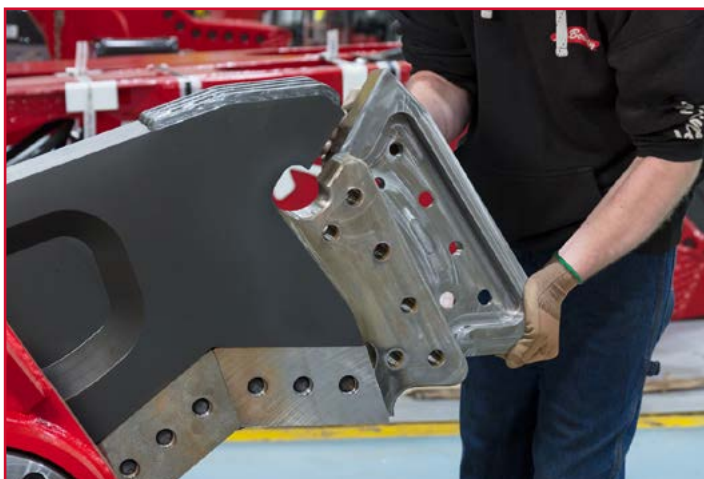
Get The Highest Quality Blade Kits For Your LaBounty® Mobile Shears

LABOUNTY® PREMIUM

LaBounty Premium blades have been designed and time tested in an entire spectrum of applications; resulting in the perfect materials and heat treatments to insure you put more scrap on the ground year after year. Our Premium blades are available for all models of LaBounty's MSD Legend, Saber, and Destroyer Series Shears.



Saber Series Blade Kit



Legend Series Blade Kit

Ni LABOUNTY® HIGH NICKEL

For maximum blade edge life, and less downtime for maintenance, turn to LaBounty's Ni blades which contain a 4% Nickel content. Our high Nickel primary and secondary blades are available for most models of LaBounty's MSD Legend, Saber, and Destroyer Series Shears.





**SELECTION.
INNOVATION.
PERFORMANCE.**

LABOUNTY®

1538 Highway 2
Two Harbors, MN, 55616



www.LaBountyAttachments.com



www.linkedin.com/company/ita-europe